

COASTAL STONE 600 X 400



Concrete Pavers • Stone Pavers • Tiles • Garden Walls & Edging
Retaining Walls • Concrete Sleepers • Concrete Blocks • Wall Cladding

COASTAL STONE 600 X 400



FEATURES

- Durable
- Hardwearing
- Smooth surface
- Washed stone texture
- Free samples available

SUITABLE FOR

- Entertaining areas
- Pool areas
- Patios and alfresco
- Courtyards
- Garden paths
- Walkways



Specifications	Size	No. per m ²	Weight per m ²	m ² per pallet
Paver	600 x 400 x 40mm	4.17	92.2kg	14.42
Bullnose	600 x 400 x 40mm	1.66 LM	22.1kg each	36.14 LM

COLOUR RANGE*

Vanilla



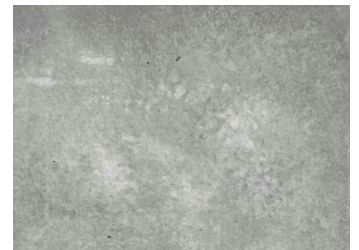
Buttermilk



Cappuccino



Charcoal



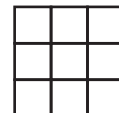
*Due to natural resources used in production there are slight colour variations between batches. Pool copings can differ in appearance to the body tile and mixing 2 different sizes can end up with slight variations. Colour swatches are a guide only. Samples you receive may also be slightly different to what is received. Coastal Stone pavers should be laid with approximately 2-3mm gap due to thickness variation. Must be laid on soft sand base. This product has a V2 Variance rating.



www.australianpaving.com.au

  [australianpavingcentre](https://www.instagram.com/australianpavingcentre)

UNIFORM APPEARANCE



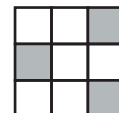
V1

SLIGHT APPEARANCE



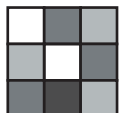
V2

MODERATE APPEARANCE



V3

SUBSTANTIAL APPEARANCE



V4