

CONCRETE SLEEPERS

Crazy Slate Charcoal



Concrete Sleepers | Industrial

1800 191 131
australianpaving.com.au



CONCRETE SLEEPERS

Features

- Steel reinforced and structurally sound
- Sturdier compared to other materials of the same class
- Easy to clean and maintain
- Cost-effective
- No need to repair/replace for many years
- Termite and other insect impervious
- Rot, warp, splinter, and split resistant
- Perfect for use on boundaries or tight spaces

Suitable for

- Retaining walls
- Garden walls
- Boundary walls

Textures*

Federation



Grecian



Crazy Slate



Industrial



Blakeview



Bedrock



Stretton



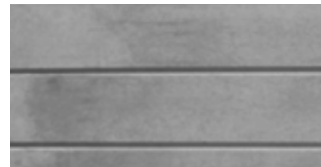
Stone wood



Concrete Sleepers | Bedrock Sandstone

Colours*

Charcoal



Sandstone



Sizes

2m x 200 x 80mm

2m x 200 x 100mm

2m x 100 x 100mm

2.4m x 200 x 100mm

2.4m x 100 x 100mm

Plinth 2.36m x 200 x 50mm

*Colours and textures are an indication only and may differ

1800 191 131

australianpaving.com.au

STEEL UPRIGHT POSTS

IMPORTANT TIP : 80mm thick concrete sleepers will not fit in 100 UB(RSJ). We recommend 120 UB(RSJ) for 80mm thick sleepers sizes.